



Paekakariki Clubhouse Project

January 2020



**Protecting our community
in the water**

In it for life



SURF LIFE SAVING



**PAEKAKARIKI SURF
LIFEGUARDS (Inc.)**

WELCOME

INTRODUCTIONS

In it for life





SURF LIFE SAVING



**PAEKAKARIKI SURF
LIFEGUARDS (Inc.)**

CLUB PROFILE

- Formed in 1913
- Membership 250 – 150 nippers
- Family oriented club
- Provides lifeguarding services on the Kapiti Coast and for other community events
- Current clubhouse built in the mid 1960's
- Over 3000 patrol hours each year

Why the need for new Clubrooms

- Structural condition of existing building
(August 2011 report by Sawrey Consulting Engineers)
- Existing building not adequate for present & future needs
- Expiry of existing ground lease & GWRC policy to retreat buildings/structures away from foreshore due to advancing sea



What are the club needs now and in the future

- Scoping undertaken by Lumin (October 2011)
- Need for much larger & more flexible space to accommodate increased club membership
- Changes in type & amount of equipment, to meet operational needs
- Allow sharing of facilities with emergency & other community-based activities

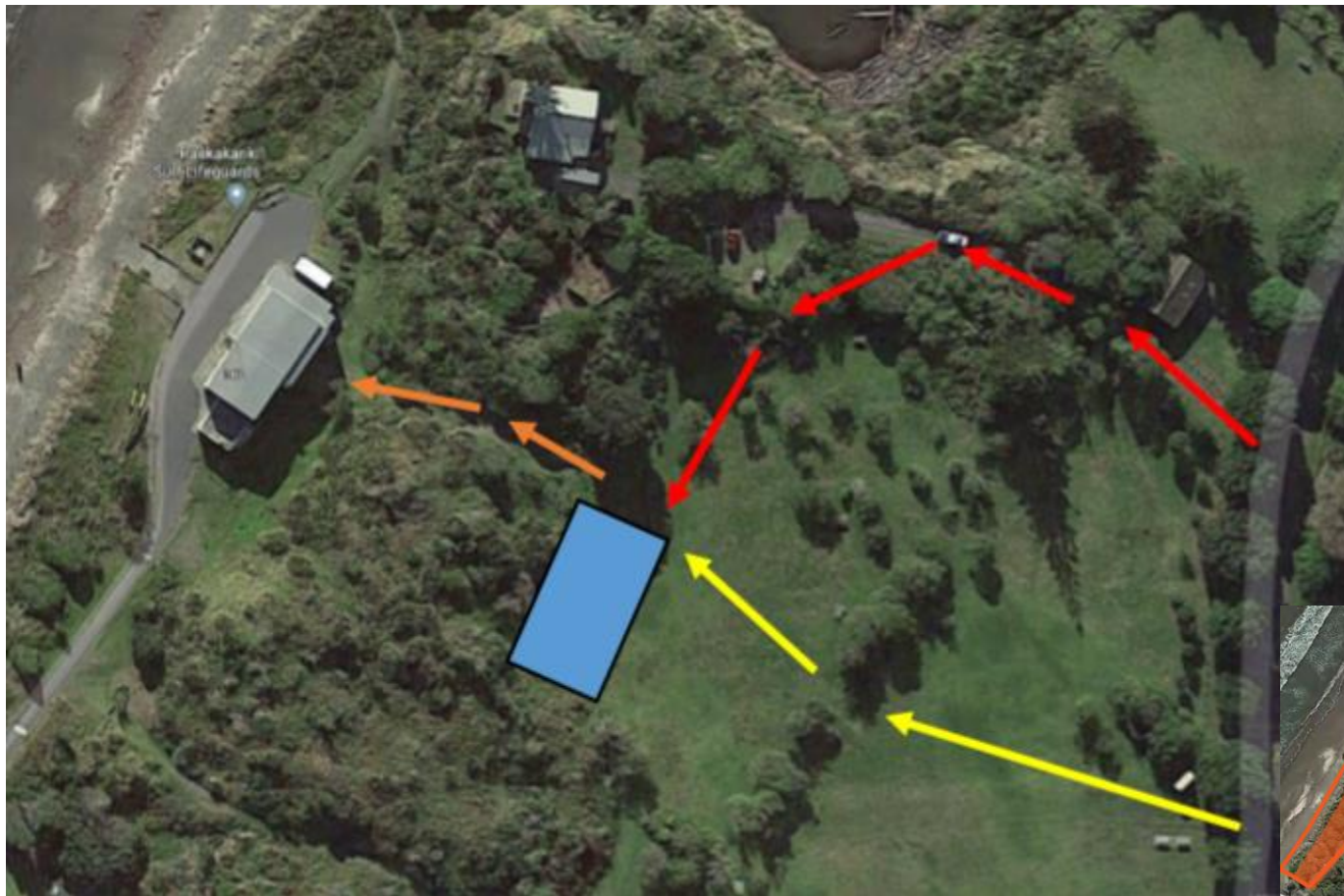
In it for life



What location options & factors have been considered?

- Availability of sites within Queen Elizabeth Park & elsewhere in Kapiti
- Proximity & ease of access to beach
- Resource Management & District Plan issues (zoning, environmental matters including ecological & historical sensitivity)
- Impact on existing use of site & surrounds
- Impact on neighbours
- Support of GWRC officers for grant of ground lease

Where are we looking to build?



PAEKAKARIKI SURF
LIFEGUARDS (Inc.)



SURF LIFE SAVING

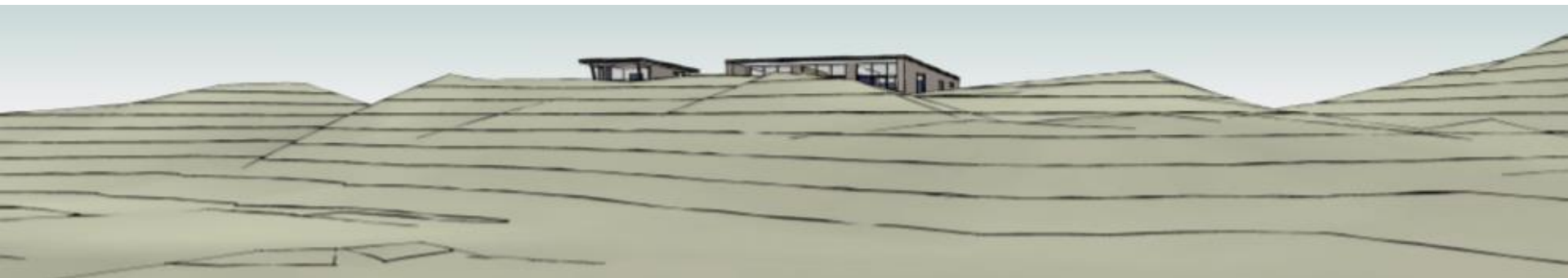
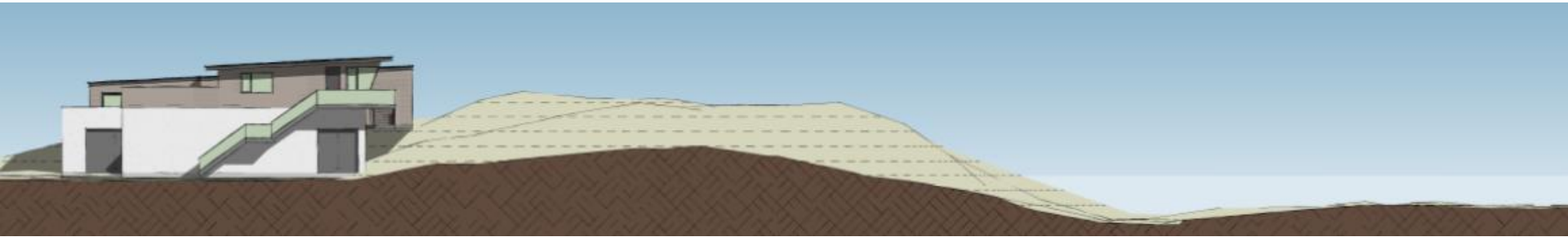
Protecting our community in the water

In it for life

What form might the building take?



What form might the building take?



PAEKAKARIKI SURF
LIFEGUARDS (Inc.)



SURF LIFE SAVING

Protecting our community in the water

In it for life

What form might the building take?



What form might the building take?



What form might the building take?



Protecting our community in the water

In it for life

Process and Timelines

- Neighbor & community dialogue
(formal consultation at consent phase) Early 2020
- Lease Application March 2020
- Finalise plans & costing 2020
- Fundraising 2020-2022
- Further consultation and planning 2020-2021
- Consent Process 2021
- Construction commences April 2022

What does Paekakariki Surf Lifeguards need

- **Community Feedback & Support**
 - Feedback about the project and design
 - Any community use
 - Letters of support for the concept
- **Fundraising**
 - Project will cost about \$3 million
 - We will need cash
 - Need contacts for people that can provide services
- **Expertise**
 - Need volunteer project managers
 - Assistance with consent process
 - Assistance with fundraising
 - Construction project manager



PAEKAKARIKI SURF
LIFEGUARDS (Inc.)



Protecting our community
in the water

In it for life

Questions